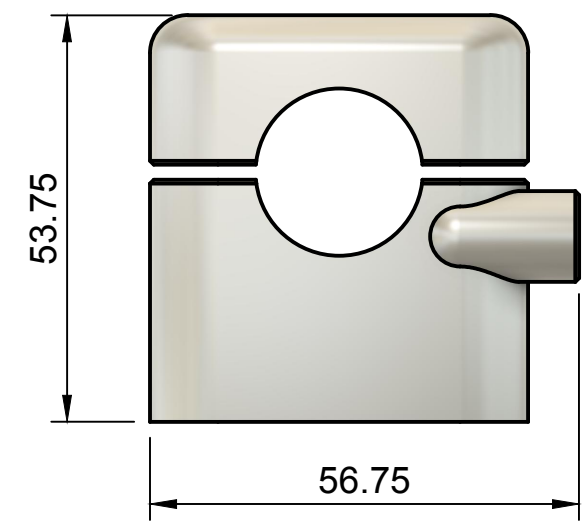
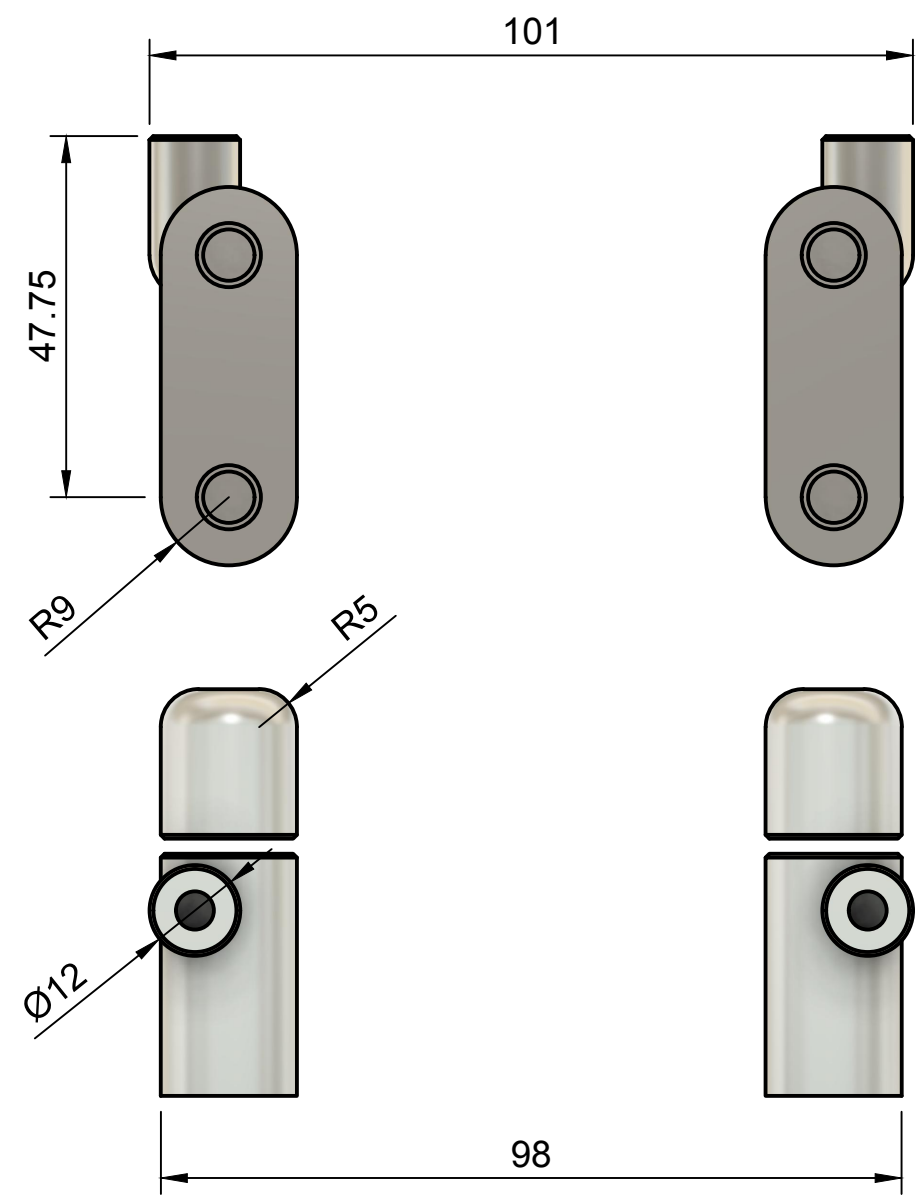
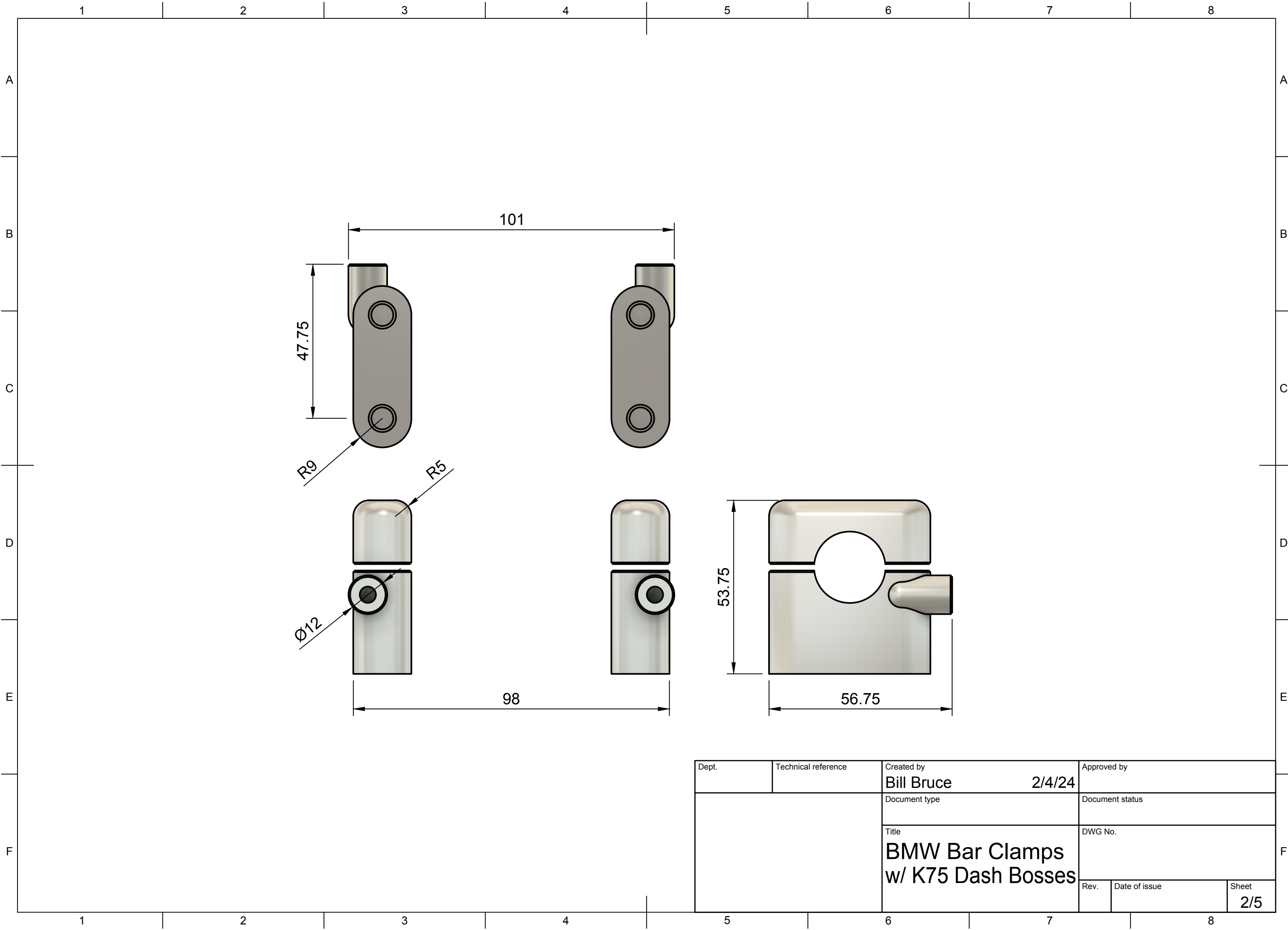
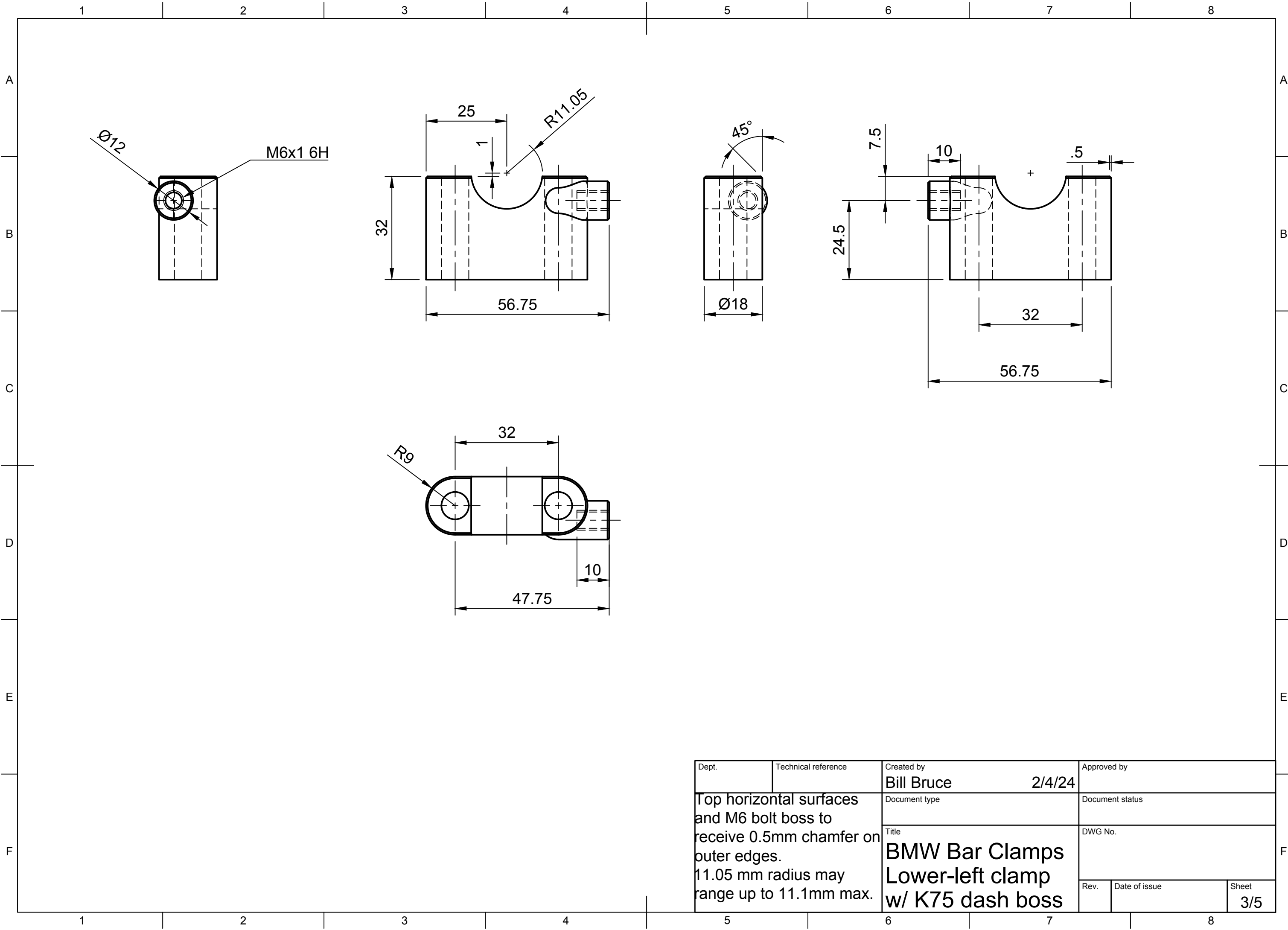


Parts List			
Item	Qty	Part Number	Material
1	1	Lower Left Clamp	Aluminum 6061
2	1	Lower Right Clamp	Aluminum 6061
3	2	Upper Clamp	Aluminum 6061

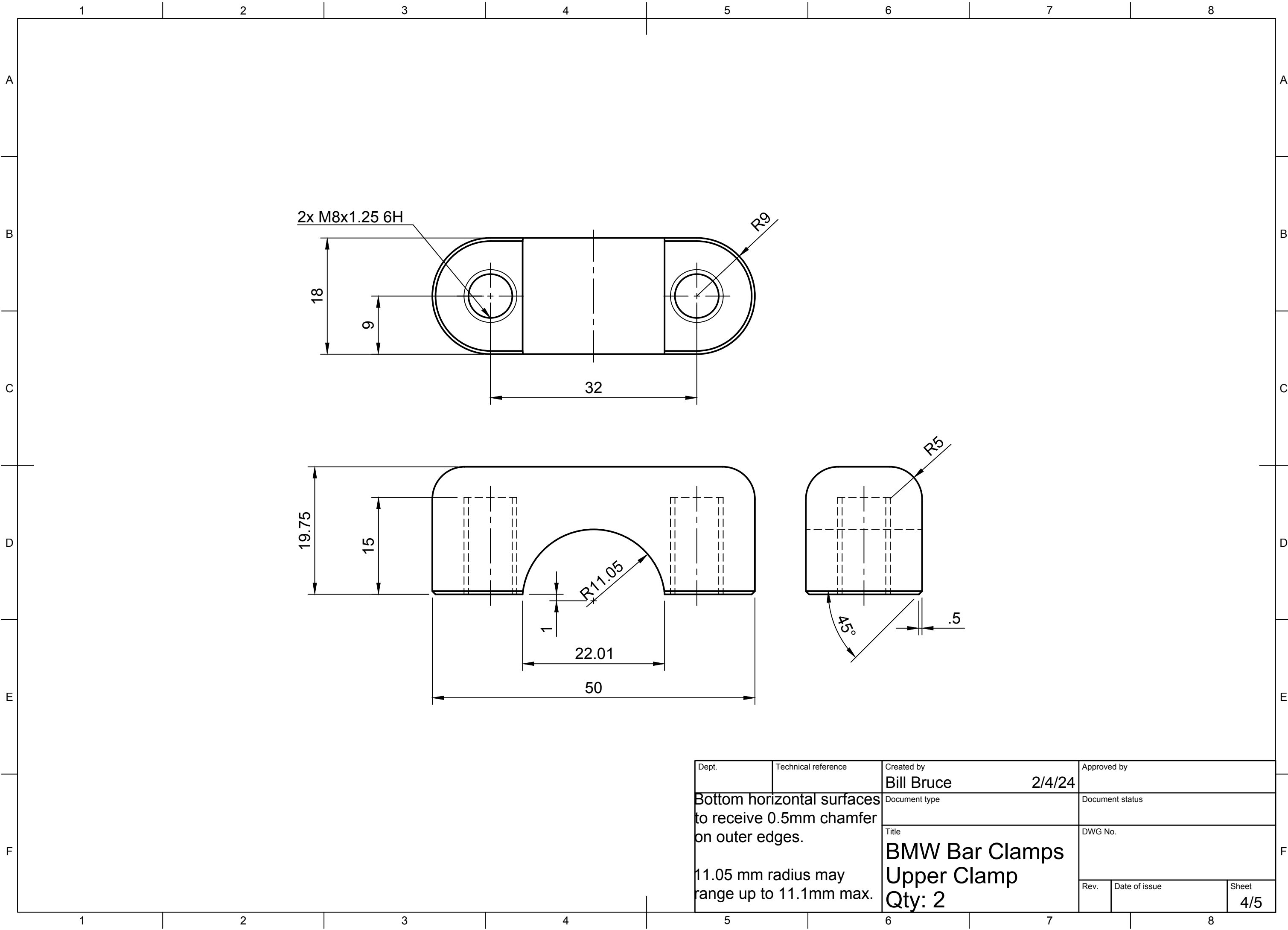
Dept.	Technical reference	Created by <b>Bill Bruce</b>	2/4/24	Approved by
All parts to be type 6061 aluminum. Finish to be brushed. Mating surfaces and bosses to receive 0.5 mm chamfers.		Document type	Document status	
		Title <b>BMW Bar Clamps w/ K75 Dash Bosses</b>		DWG No.
		Rev.	Date of issue	Sheet <b>1/5</b>



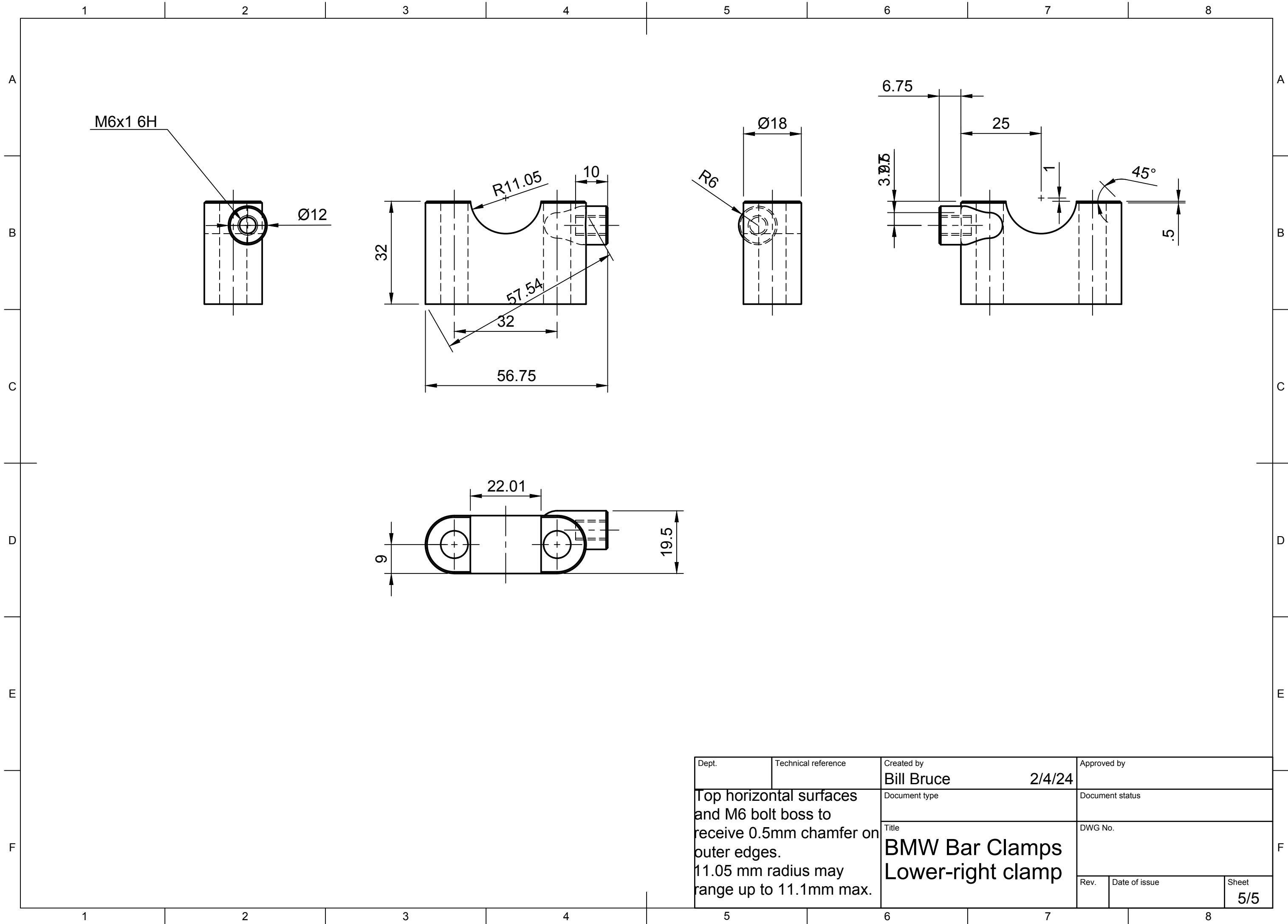
Dept.	Technical reference	Created by <b>Bill Bruce</b>	2/4/24	Approved by
		Document type	Document status	
		Title <b>BMW Bar Clamps w/ K75 Dash Bosses</b>	DWG No.	
Rev.	Date of issue	Sheet	2/5	



Dept.	Technical reference	Created by <b>Bill Bruce</b>	2/4/24	Approved by
Top horizontal surfaces and M6 bolt boss to receive 0.5mm chamfer on outer edges. 11.05 mm radius may range up to 11.1mm max.		Document type	Document status	
		Title <b>BMW Bar Clamps          Lower-left clamp          w/ K75 dash boss</b>		DWG No.
		Rev.	Date of issue	Sheet <b>3/5</b>



Dept.	Technical reference	Created by <b>Bill Bruce</b>	2/4/24	Approved by
Bottom horizontal surfaces to receive 0.5mm chamfer on outer edges.		Document type		Document status
		Title <b>BMW Bar Clamps Upper Clamp</b>		DWG No.
11.05 mm radius may range up to 11.1mm max.		Qty: 2		Rev.
		Date of issue		Sheet <b>4/5</b>



Dept.	Technical reference	Created by <b>Bill Bruce</b>	2/4/24	Approved by
Top horizontal surfaces and M6 bolt boss to receive 0.5mm chamfer on outer edges. 11.05 mm radius may range up to 11.1mm max.		Document type		Document status
		Title <b>BMW Bar Clamps Lower-right clamp</b>		DWG No.
		Rev.	Date of issue	Sheet <b>5/5</b>